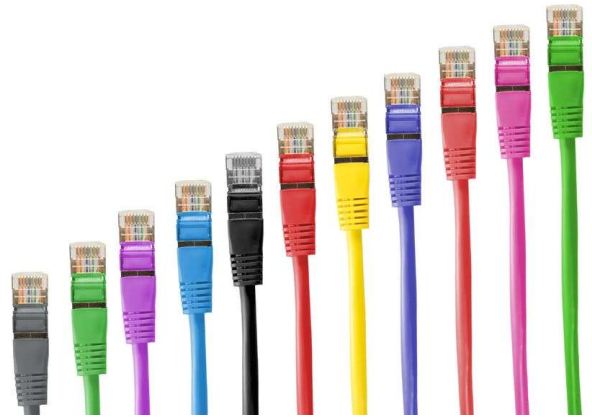


RJ45 Copper Patchleads, Cat5e, Cat6, Cat6a

Features

- > RJ45 copper patchleads for network interconnects
- > Available in Cat5e, Cat6 and Cat6a options
- > Available with PVC or LSZH jackets (Cat6a, LSZH only)
- > Shielded cable options:
 - Cat5e – U/UTP or F/UTP
 - Cat6 – U/UTP or F/UTP
 - Cat6a – U/FTP or S/FTP
 - U/UTP – unshielded, unscreened pairs
 - F/UTP – overall shield, unscreened pairs
 - U/FTP – unshielded, foil screened pairs
 - S/FTP – overall shield, foil screened pairs
- > Verified to ISO11801 standards
- > Tested to EIA/TIA standards (Cat5e – Class D+, Cat6 – Class E, Cat6a – Class EA)
- > Flush moulded (U/UTP only) or snagless boots
- > Available in a wide range of colours
- > Lengths from 0.3m to 10m



Applications

- > Cat5e – 100Mb/Gigabit network connections
- > Cat6 – Gigabit connections, short range 10G
- > Cat6a – 10G Ethernet connections

Ordering Information

Advance Part Code	Description
A-CL-XX-XX-X-XXM-XX	Advance RJ45 Copper Patchlead
XX	Cable Type – Cat5e (5E), Cat6 (6X)m Cat6a (6A)
XX	Shielding – Unshielded (UU), Foil Shielded (FU), Screened Foil Shielded (SF)
X	Jacket Type – PVC (P), LSZH (L)
XX	Length – 0.3m (0-3), 0.5m (0-5), 1m (1), 2m (2), 3m (3), 5m, (5), 7m (7), 10m (10)
XX	Colour – Black, (BK), Blue (BE), Brown (BN), Green (GN), Grey (GY), Orange (OE), Pink (PK), Red (RD), Violet (VT), White (WE), Yellow (YW)